



More Local

More Mutual

More Equitable

More Sustainable





## Tolworth Area Plan study area

Tolworth is a suburban town located in the south-eastern area of the Royal Borough of Kingston upon Thames, which regards itself as distinct from metropolitan London. It has a District Centre located along Tolworth Broadway and a railway station which connects the area to central London. Its significant features include a large area of Metropolitan Open Land and the largest Strategic Industrial Location within the borough. Reflecting its peripheral location, Tolworth's character is derived from its affordable housing, convenient retail offer and easy access to employment centres in Kingston and central London. This accessibility also shapes Tolworth's character by generating significant levels of traffic and congestion, with associated poor air quality.

The parameters for the Tolworth Area Plan boundary have been defined by Ewell Road along the northern edge (with the inclusion of the church and primary school), Red Lion Road, the entire Sunray estate to the east and the Hogsmill River to the south east (which coincides with the borough and Greater London boundary).

The Chessington & Davis Road Industrial Estate is identified within the London Plan as a Strategic Industrial Location and is an important consideration for the local economy of Tolworth, however it appears to have a separate identity from Tolworth. It is a vital employment area for the borough and therefore is excluded to protect from any future loss of employment space.

The Metropolitan Open Land is a significant asset to the local area and has been included within the Tolworth Area Plan boundary.

### KEY



Tolworth Area Plan study area

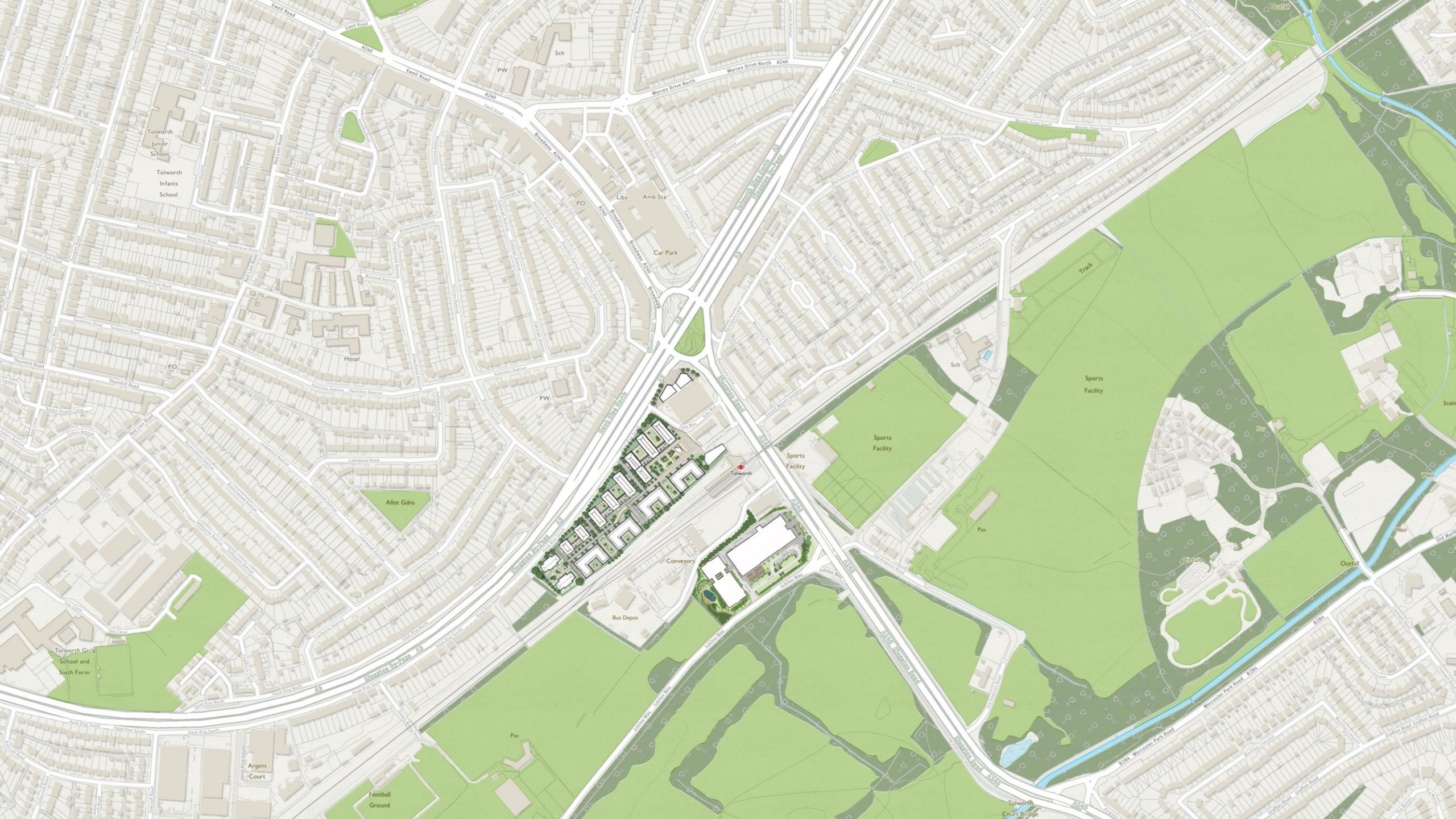


0

250m



























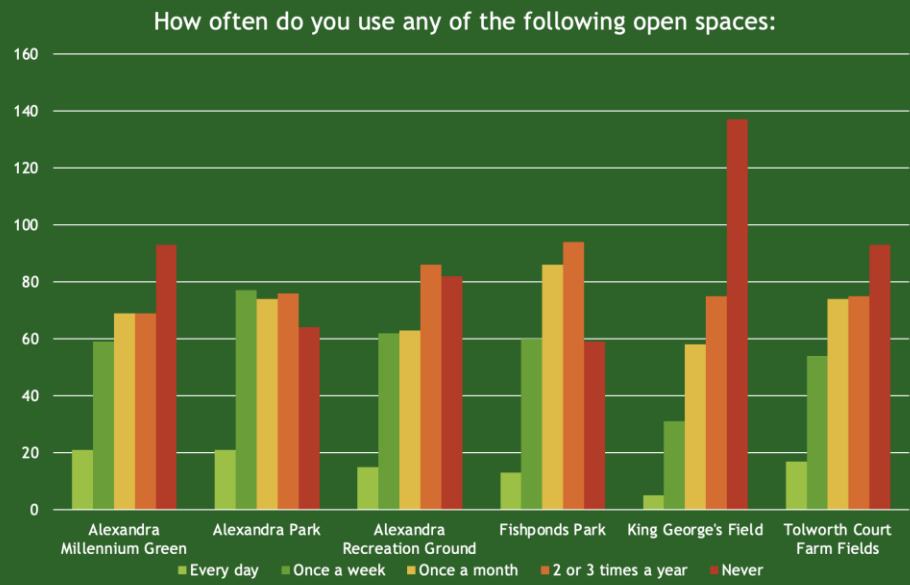




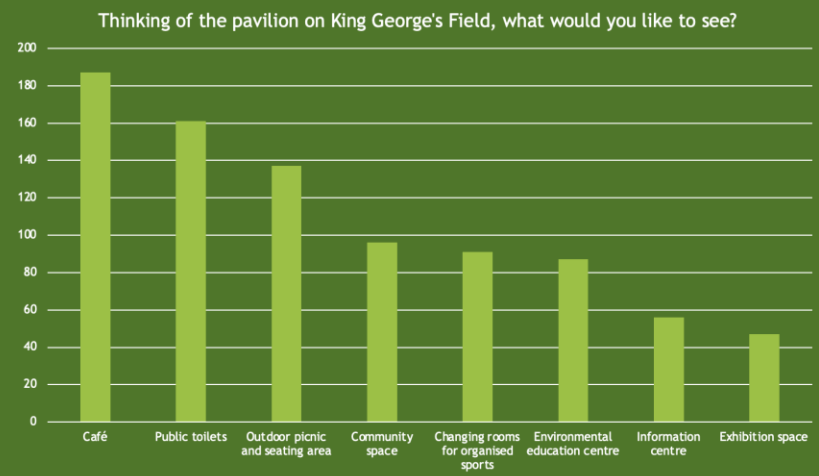




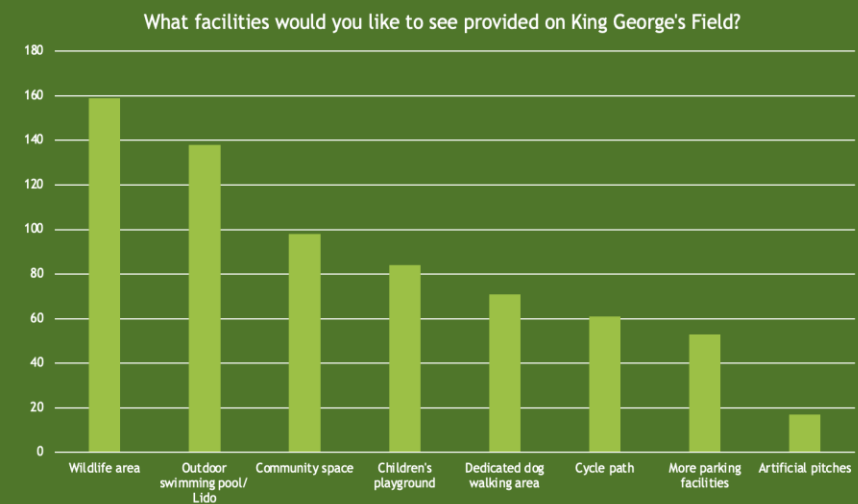




## Thinking of the pavilion on King George's Field, what would you like to see:



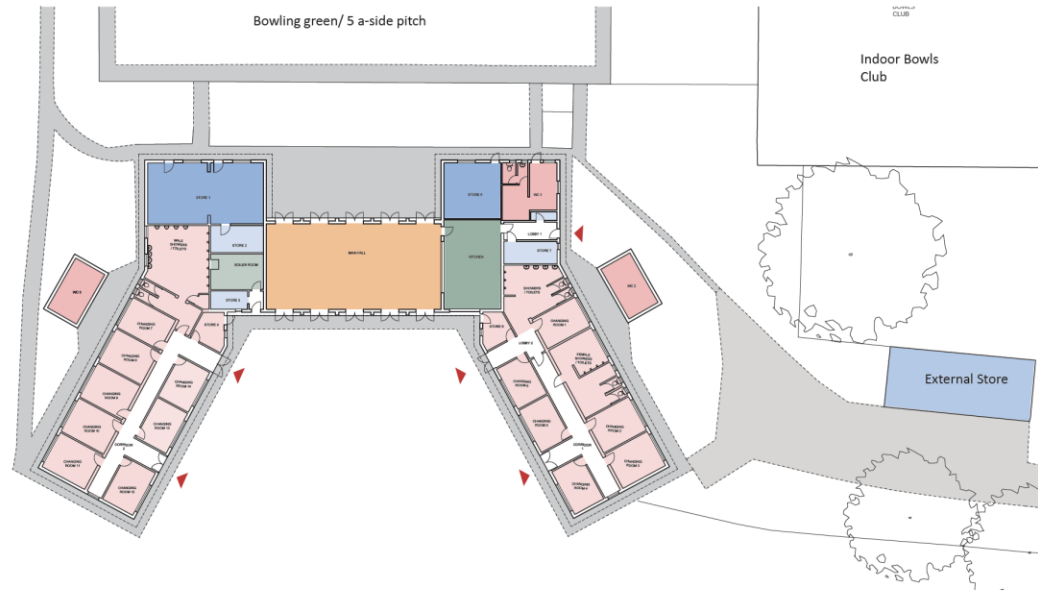
## What facilities would you like to see provided on King George's Field?







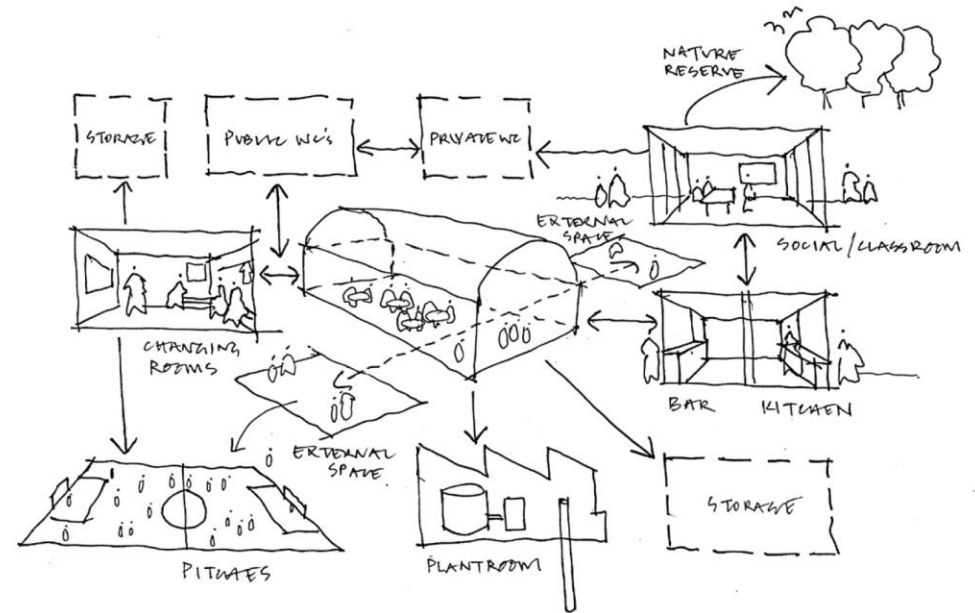
Existing Layout



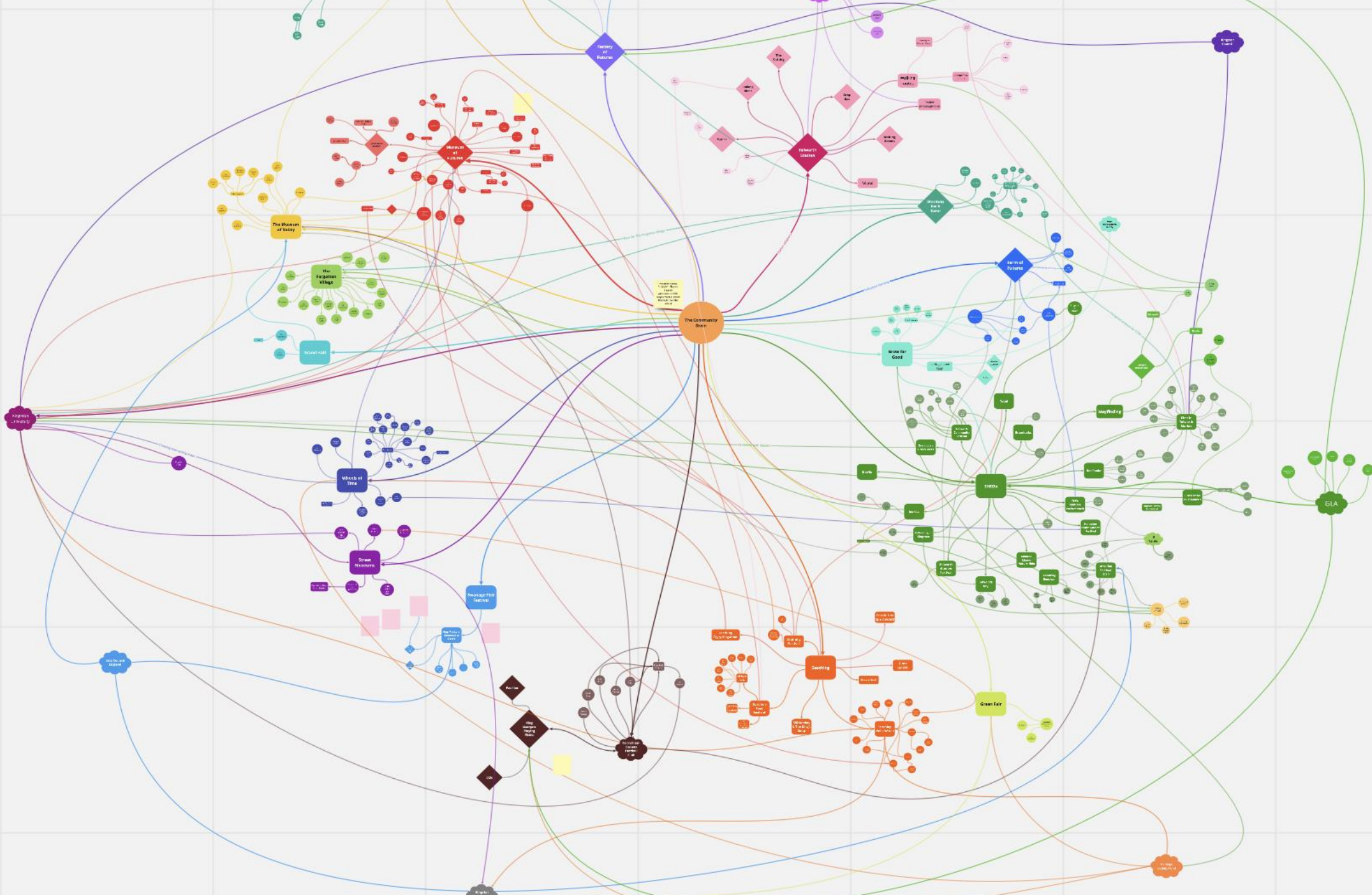
KEY

|                |                  |
|----------------|------------------|
| Changing Rooms | External Store   |
| Public WC      | Ancillary Spaces |
| Main Hall      | Plant Room       |
| Storage        | Kitchen          |

|                          |       |
|--------------------------|-------|
| Main Hall                | 106   |
| Kitchen                  | 36.1  |
| WC 1                     | 20.4  |
| WC 2                     | 13.5  |
| WC 3                     | 13.5  |
| Store 1                  | 49.9  |
| Store 2                  | 10.2  |
| Store 3                  | 6.8   |
| Store 4                  | 6.9   |
| Store 5                  | 22.5  |
| Store 6                  | 6.2   |
| Store 7                  | 8.5   |
| Boiler Room              | 12.8  |
| Lobby 1                  | 6.7   |
| Lobby 2                  | 12.2  |
| Corridor 1               | 24.1  |
| Corridor 2               | 31.4  |
| Changing room 1          | 11.3  |
| Changing room 2          | 13    |
| Changing room 3          | 13.3  |
| Changing room 4          | 11.3  |
| Changing room 5          | 11.2  |
| Changing room 6          | 10.6  |
| Changing room 7          | 11.7  |
| Changing room 8          | 13    |
| Changing room 9          | 13.1  |
| Changing room 10         | 12.9  |
| Changing room 11         | 3.3   |
| Changing room 12         | 11    |
| Changing room 13         | 11.1  |
| Changing room 14         | 11.7  |
| Female Showers / Toilets | 26    |
| Male Showers / Toilets   | 39.9  |
| Shower / Toilets         | 17.8  |
| Total (NIA)              | 629.9 |













More Local

More Mutual

More Equitable

More Sustainable

